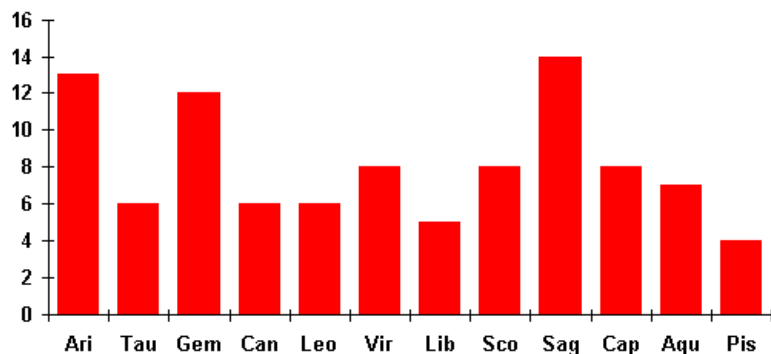


### Mystics: Sun Signs; t=97

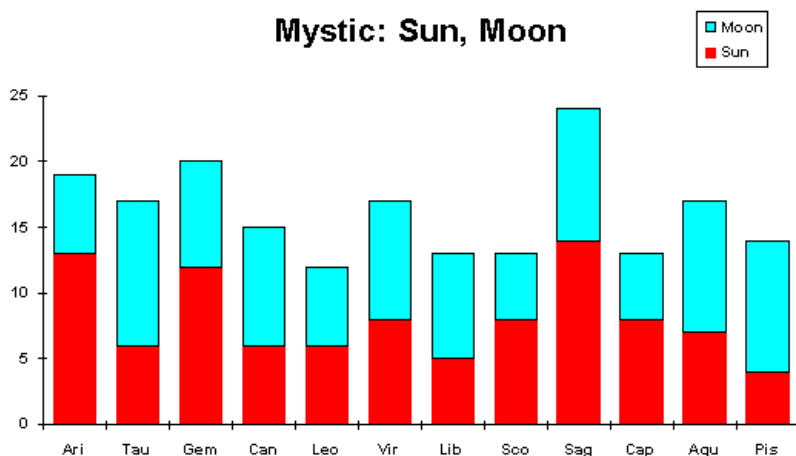


This is a graph of the sun signs of all persons found by keyword search of Grolier's CD-ROM encyclopedia for the word "mystic, mystical, mysticism." The distribution is not significant. The Sagittarius and Gemini peaks make sense in terms of ray theory, the Aries peak does not. To permit a conclusion, a larger study is needed or a tighter criteria of selection than I used. (Sometime after graphing and writing this, I used additional reference to expand the mystics samples size to 120 individuals. The sign distribution then became  $p < .05$  )

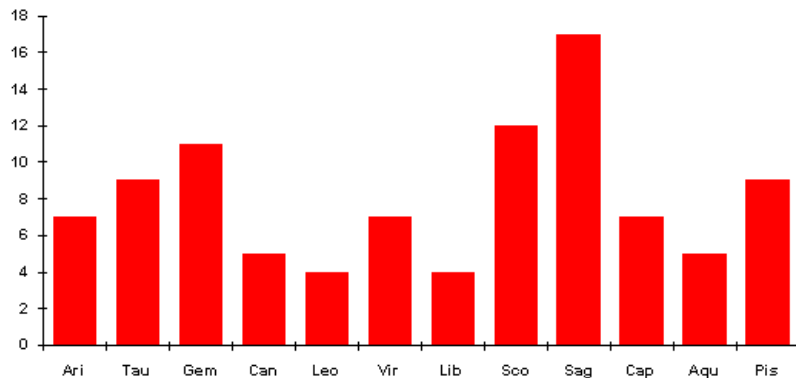
My hypothesis for this study was emphasis on heart line signs (Sagittarius and Gemini match this but Aries does not).

Below are a series of graphs of sign positions of this group of mystics. These include various composite graphs. I've included a number of groups ("sacred, nonsacred," and the "illumination" planets Jupiter and Mercury that are part of Bailey's Esoteric.) Noteworthy is the series is the persistence of the sign Sagittarius.

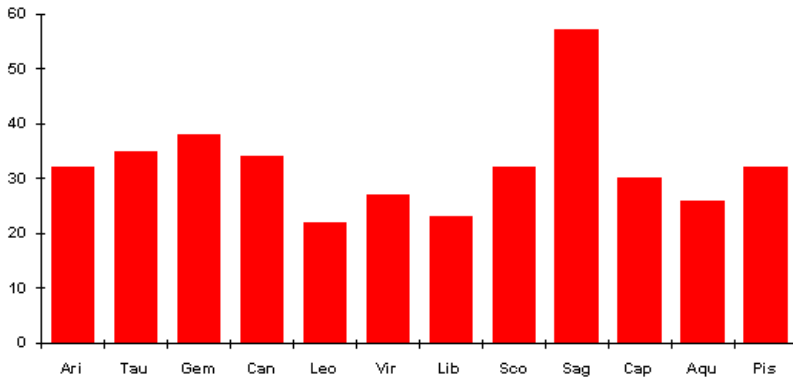
### Mystic: Sun, Moon



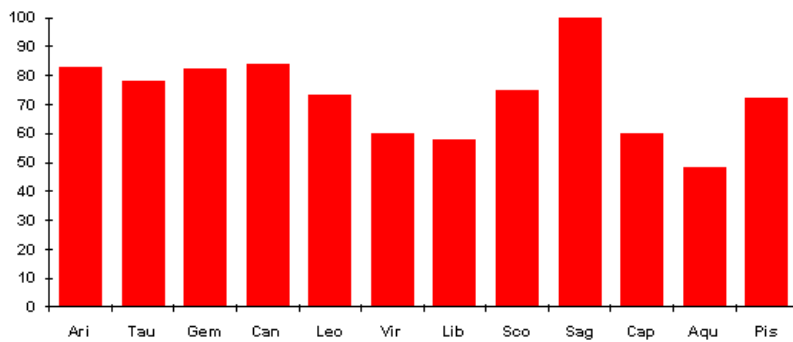
### Mystic: Mercury



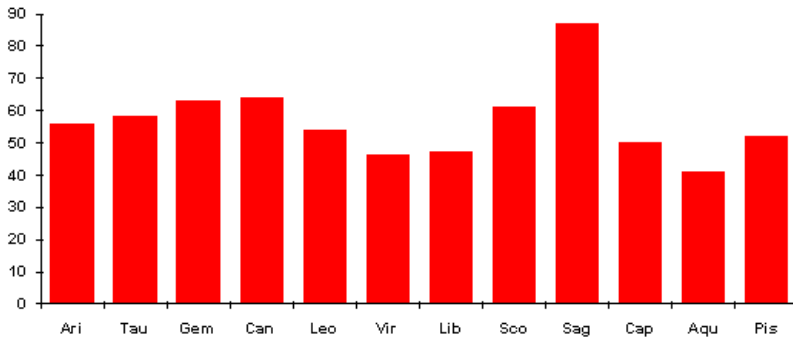
### Mystic: Sun, Moon, Mercury, Venus



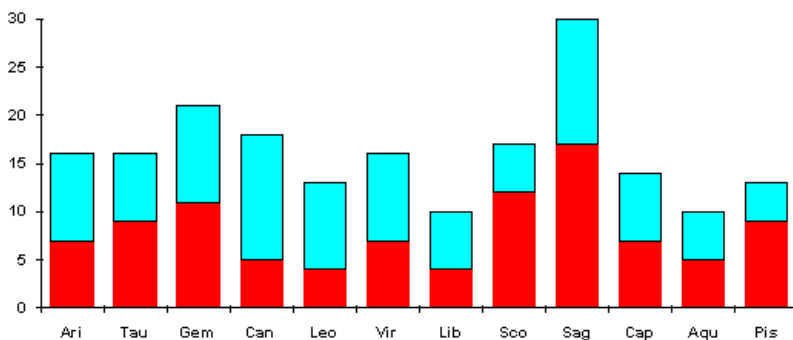
### Mystic: Sun, Moon, and all planets out to Neptune



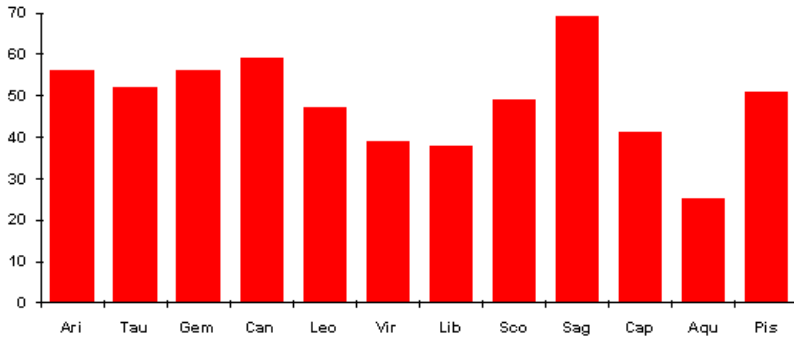
### Mystic: Sun, Moon, Mercury, Venus, Mars, Jupiter, Saturn



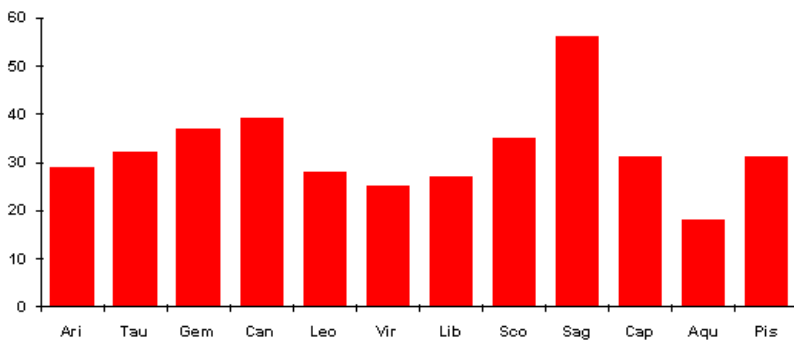
### Mystic: Mercury, Jupiter (illumination, vision)



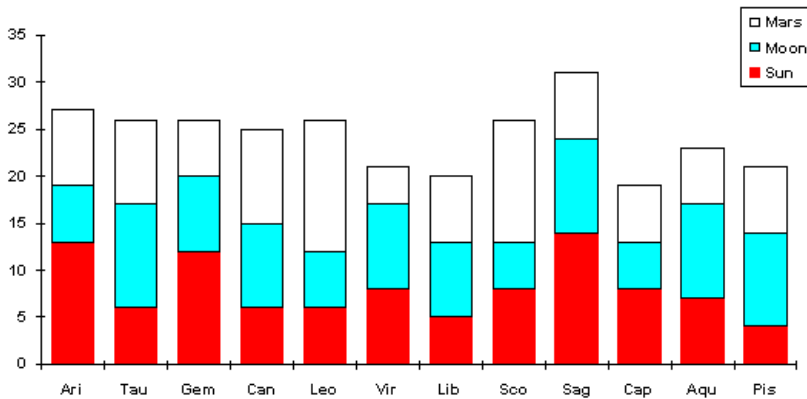
### Mystic: Mercury, Venus, Jupiter, Saturn, Neptune, Uranus (sacred planets)



### Mystic: Mercury, Venus, Jupiter, Saturn (sacred planets out to Saturn)



### Mystic: Sun, Moon, Mars (nonsacred)



### Mystic: Sun, Moon, Mercury, Venus, Mars, Jupiter, Saturn Signs

